



# Chelan-Douglas Pathways

## Survey and Public Input Map Results

The following information is a summary of the results from the Chelan-Douglas Pathways Survey and Public Input Map.

The public feedback period was from July 13 to November 4, 2024.

### SURVEY RESULTS

#### Q1. Which corridor(s) do you want to provide feedback on?

- Out of 1811 total respondents, only 108 (6%) provided feedback on all four corridors.

Table 1: Responses to "Which corridor(s) do you want to provide feedback on?"

	Total Respondents	Chelan to Manson Corridor	Leavenworth to Cashmere to Wenatchee Corridor	Malaga to Wenatchee Corridor	Rock Island to East Wenatchee Corridor
<b>Responses</b>	1,811 (100%)	445 (25%)	1,333 (74%)	403 (22%)	403 (22%)

#### Q2. In the Chelan-Douglas Region, I am a...

Responses:

- **97% resident (1,748 respondents)**
- Other groups included:
  - 13% Trail Advocate (227 respondents)
  - 10% Business Owner (184 respondents)
  - 5% Tree Fruit Grower/Packer/Shipper (90 respondents)
  - 4% Non-Profit or Community-Based Organization Representative (67 respondents)

Table 2: Responses to "In the Chelan-Douglas Region, I am a..."

Response	Total Respondents	Chelan to Manson Corridor	Leavenworth to Cashmere to Wenatchee Corridor	Malaga to Wenatchee Corridor	Rock Island to East Wenatchee Corridor
Resident	1,748 (97%)	428 (96%)	1,290 (97%)	394 (98%)	390 (97%)
Visitor	35 (2%)	17 (4%)	29 (2%)	9 (2%)	10 (2%)
Business Owner	184 (10%)	44 (10%)	151 (11%)	41 (10%)	40 (10%)
Tree fruit grower/ packer/ shipper	90 (5%)	17 (4%)	76 (6%)	12 (3%)	10 (2%)
Trail Advocate	227 (13%)	56 (13%)	194 (15%)	67 (17%)	61 (15%)
Elected Official	22 (1%)	5 (1%)	14 (1%)	4 (1%)	6 (1%)
Land Manager	29 (2%)	12 (3%)	19 (1%)	7 (2%)	6 (1%)
Non-profit or community-based organization representative	67 (4%)	17 (4%)	60 (5%)	19 (5%)	19 (5%)
Other	39 (2%)	9 (2%)	33 (2%)	9 (2%)	11 (3%)
<b>Total</b>	<b>1,811 (100%)</b>	<b>445 (100%)</b>	<b>1,333 (100%)</b>	<b>403 (100%)</b>	<b>403 (100%)</b>

### Q3. What are the main reasons you would use a walking or biking path in the corridor(s) you selected?

- 87% for pleasure (1,574 respondents)
- 33% to complete shopping, errands, and visiting trips (594 respondents)
- 21% to go to or from school or work (382 respondents)

Table 3: Responses to "What are the main reasons you would use a walking or biking path in the corridor(s) you selected?"

Response	All Responses	Chelan to Manson Corridor	Leavenworth to Cashmere to Wenatchee Corridor	Malaga to Wenatchee Corridor	Rock Island to East Wenatchee Corridor
Pleasure, exercising, or recreation	1574 (87%)	374 (84%)	1182 (89%)	370 (92%)	364 (90%)
Going to / from work or school	382 (21%)	72 (16%)	322 (24%)	98 (24%)	87 (22%)
Shopping, running errands, or visiting friends	594 (33%)	129 (29%)	489 (37%)	152 (38%)	142 (35%)
Safety	4 (<1%)	0 (0%)	3 (<1%)	1 (<1%)	1 (<1%)
I would not use a path on the corridor(s) I selected	140 (8%)	50 (11%)	94 (7%)	20 (5%)	20 (5%)
Other	34 (2%)	11 (2%)	24 (2%)	9 (2%)	13 (3%)
<b>Total</b>	<b>1,811 (100%)</b>	<b>445 (100%)</b>	<b>1,333 (100%)</b>	<b>403 (100%)</b>	<b>403 (100%)</b>

## Q4. What mode of transportation would you use on a path in the corridor(s) you selected?

### Responses:

- **77% would bike (1,402 respondents)**
- **64% would walk (1,165 respondents)**
- 33% would jog (593 respondents)
- 28% would e-bike (499 respondents)
- 2% would use a wheelchair (36 respondents)
- 28 respondents mentioned rollerblading, cross-country skiing, and horseback riding, even though these modes were not included in the survey options provided.

Table 4: Responses to "What mode of transportation would you use on a path in the corridor(s) you selected?"

Response	All Responses	Chelan to Manson Corridor	Leavenworth to Cashmere to Wenatchee Corridor	Malaga to Wenatchee Corridor	Rock Island to East Wenatchee Corridor
Biking	1,402 (77%)	314 (71%)	1,089 (82%)	341 (85%)	327 (81%)
Walking	1,165 (64%)	295 (66%)	837 (63%)	284 (70%)	290 (72%)
Jogging	593 (33%)	133 (30%)	488 (37%)	140 (35%)	126 (31%)
E-bike/Scooter or similar	499 (28%)	129 (29%)	387 (29%)	116 (29%)	109 (27%)
Wheelchair	36 (2%)	11 (2%)	25 (2%)	9 (2%)	14 (3%)
Rollerblading	11 (1%)	3 (1%)	10 (1%)	5 (1%)	5 (1%)
Skiing	11 (1%)	3 (1%)	10 (1%)	1 (<1%)	1 (<1%)
Horseback	6 (<1%)	2 (<1%)	4 (<1%)	1 (<1%)	2 (<1%)
Other	52 (3%)	15 (3%)	40 (3%)	15 (4%)	16 (4%)
None	129 (7%)	44 (10%)	90 (7%)	21 (5%)	19 (5%)
<b>Total</b>	<b>1,811 (100%)</b>	<b>445 (100%)</b>	<b>1,333 (100%)</b>	<b>403 (100%)</b>	<b>403 (100%)</b>

## Q5. How often do you anticipate you would use a path in the corridor(s) you selected?

### Responses:

- **51% would use the path weekly. (927 of respondents)**
- 24% would use the path monthly. (441 respondents)
- 19% would use the path daily. (336 of respondents)
- 8% would never use the path. (142 of respondents)

Response	All Responses	Chelan to Manson Corridor	Leavenworth to Cashmere to Wenatchee Corridor	Malaga to Wenatchee Corridor	Rock Island to East Wenatchee Corridor
Daily	336 (19%)	89 (20%)	242 (18%)	89 (22%)	82 (20%)
Weekly	927 (51%)	220 (49%)	688 (52%)	227 (56%)	230 (57%)
Monthly	441 (24%)	102 (23%)	350 (26%)	91 (23%)	91 (23%)
Never	142 (8%)	50 (11%)	100 (8%)	25 (6%)	23 (6%)
Other	80 (4%)	15 (3%)	60 (5%)	22 (5%)	26 (6%)
<b>Total</b>	<b>1811 (100%)</b>	<b>445 (100%)</b>	<b>1333 (100%)</b>	<b>403 (100%)</b>	<b>403 (100%)</b>

## Q6. What is your zip code?

Most respondents (97%) live within the Chelan-Douglas Transportation Council Regional Transportation Planning Organization area. However, a small percentage (3%) of responses came from other counties in Washington, including King, Snohomish, Whatcom, Cowlitz, Okanogan, and Ferry counties. Additionally, one respondent was from California, and another was from Alaska.

**Table 5: Responses to "What is your zip code?"**

Response	All Responses	Chelan to Manson Corridor	Leavenworth to Cashmere to Wenatchee Corridor	Malaga to Wenatchee Corridor	Rock Island to East Wenatchee Corridor
98801 (Wenatchee)	445 (25%)	78 (18%)	412 (31%)	179 (44%)	135 (33%)
98826 (Leavenworth)	338 (19%)	18 (4%)	337 (25%)	21 (5%)	21 (5%)
98802 (East Wenatchee)	193 (11%)	28 (6%)	127 (10%)	64 (16%)	139 (34%)
98815 (Cashmere)	175 (10%)	7 (2%)	175 (13%)	9 (2%)	9 (2%)
98816 (Chelan)	156 (9%)	156 (35%)	24 (2%)	9 (2%)	11 (3%)
98831 (Manson)	106 (6%)	106 (24%)	10 (1%)	2 (<1%)	5 (1%)
98847 (Peshastin)	88 (5%)	3 (1%)	88 (7%)	3 (1%)	3 (1%)
98828 (Malaga)	82 (5%)	3 (1%)	20 (2%)	80 (20%)	10 (2%)
98850 (Rock Island)	25 (1%)	0 (0%)	1 (<1%)	1 (<1%)	25 (6%)
98821 (Dryden)	13 (1%)	0 (0%)	12 (1%)	0 (0%)	1 (<1%)
98836 (Monitor)	3 (<1%)	0 (0%)	3 (<1%)	0 (0%)	1 (<1%)
Other	187 (10%)	46 (10%)	124 (10%)	34 (9%)	43 (11%)
<b>Total</b>	<b>1,811 (100%)</b>	<b>445 (100%)</b>	<b>1333 (100%)</b>	<b>403 (100%)</b>	<b>403 (100%)</b>

## **PUBLIC INPUT MAP RESULTS**

Visit the Project Website to review the map results from the Public Input Map. →

- The public input map was open from July 2024 to November 2024.
- 893 people drew points and lines or voted on other people’s input.
- In total, 2,167 points and lines were added to the input map.

**Table 6. Locations of points placed on the public input map by category.**

<b>Zip Code</b>	<b>Community</b>	<b>I Live / Work Here</b>	<b>Destinations</b>	<b>Areas to Avoid</b>	<b>Other Ideas</b>
98801	Wenatchee	224 (51%)	171 (39%)	33 (8%)	12 (3%)
98826	Leavenworth	172 (39%)	229 (52%)	12 (3%)	23 (5%)
98815	Cashmere	111 (38%)	132 (45%)	49 (17%)	3 (1%)
98802	East Wenatchee	103 (55%)	57 (31%)	11 (6%)	15 (8%)
98816	Chelan	76 (44%)	77 (45%)	8 (5%)	10 (6%)
98847	Peshastin	54 (32%)	66 (39%)	45 (27%)	4 (2%)
98831	Manson	44 (42%)	60 (57%)	(0%)	2 (2%)
98828	Malaga	35 (49%)	20 (28%)	15 (21%)	1 (1%)
98850	Rock Island	11 (22%)	39 (76%)	1 (2%)	(0%)
98821	Dryden	10 (45%)	7 (32%)	3 (14%)	2 (9%)
98836	Monitor	7 (26%)	11 (41%)	8 (30%)	1 (4%)
<b>Total</b>		<b>847 (43%)</b>	<b>869 (44%)</b>	<b>185 (9%)</b>	<b>73 (4%)</b>

### **Step 1. Live and Work**

Respondents were asked to place a pin near where they live and/or work.

- In total, 853 points were placed as locations where people live and/or work
- 851 respondents (>99%) indicated they live and/or work in Chelan or Douglas County

### **Step 2. Destinations**

Respondents were asked to identify any places or destinations that they would like to access near the corridor, including businesses, parks, schools, natural areas, or viewpoints. The project team removed destinations that were not relevant to the project (i.e. my friend’s house) and consolidated duplicative destinations on the following maps.

- In total, 883 points were identified as destinations.
- 156 destinations were not labeled by respondents. The project team labeled the obvious intended destinations wherever possible.
- The highest density of user-submitted destinations is in Leavenworth and Cashmere.

### Step 3. Potential Pathways Opportunity

Respondents were asked to identify potential pathway connections that would best improve access to natural areas, views, businesses, parks, etc. along the corridor.

In total, 171 potential pathway connections (lines) were drawn on the map, 156 of which were labeled with a description.

- Respondents emphasized the need for safer pedestrian pathways, particularly around high-traffic areas like bridges, schools, and busy intersections.
- There were numerous requests for protected bike lanes, bike paths parallel to major highways, and safe routes that avoid high-traffic areas. A recurring theme is the desire for off-highway alternatives to reduce cyclist and pedestrian exposure to dangerous roadways, with alternative routes through back roads or underutilized corridors.

### Step 4. Areas to Avoid

Respondents were asked to identify any locations that should not have a pathway nearby. This section of the survey generated 185 comments and the most like and dislike activity of all categories.

These concerns were then categorized into the following six categories:

- Environmental: Concerns about environmental impacts or pollution.
- Pinch Points/Narrow Bridge: Concerns about the safety of trail users on narrow bridges.
- Orchard/Agricultural Impacts: Concerns about impacts to or impacts from agricultural operations.
- Feasibility: Location-specific concerns about feasibility.
- Private Property Impacts: Concerns about impacts to private property.
- Safety (Traffic): Concerns about the safety of trail users given the presence of vehicular traffic.
- Safety (Other): General concerns about the safety of trail users.

#### **Key Findings:**

- Many respondents expressed concerns about trails passing too close to orchards, citing issues such as spray drift, objects thrown by mowers, and the potential impact on agricultural operations. A strong sentiment is to avoid these areas to protect farming practices and prevent potential conflicts.
- Respondents frequently mentioned avoiding trails along or near highways and high-traffic roads. Some respondents prefer trails to be located away from developed areas, particularly highways, to preserve a more natural and quieter environment.
- There are some concerns voiced about trail alignments being shown on private property.
- While most areas of concern were noted around orchards, other issues included environmental concerns, feasibility concerns, narrow bridges, and traffic safety.

# Chelan to Manson Corridor

Figure 1: Community-identified pathway opportunities in the Chelan to Manson Corridor (1)

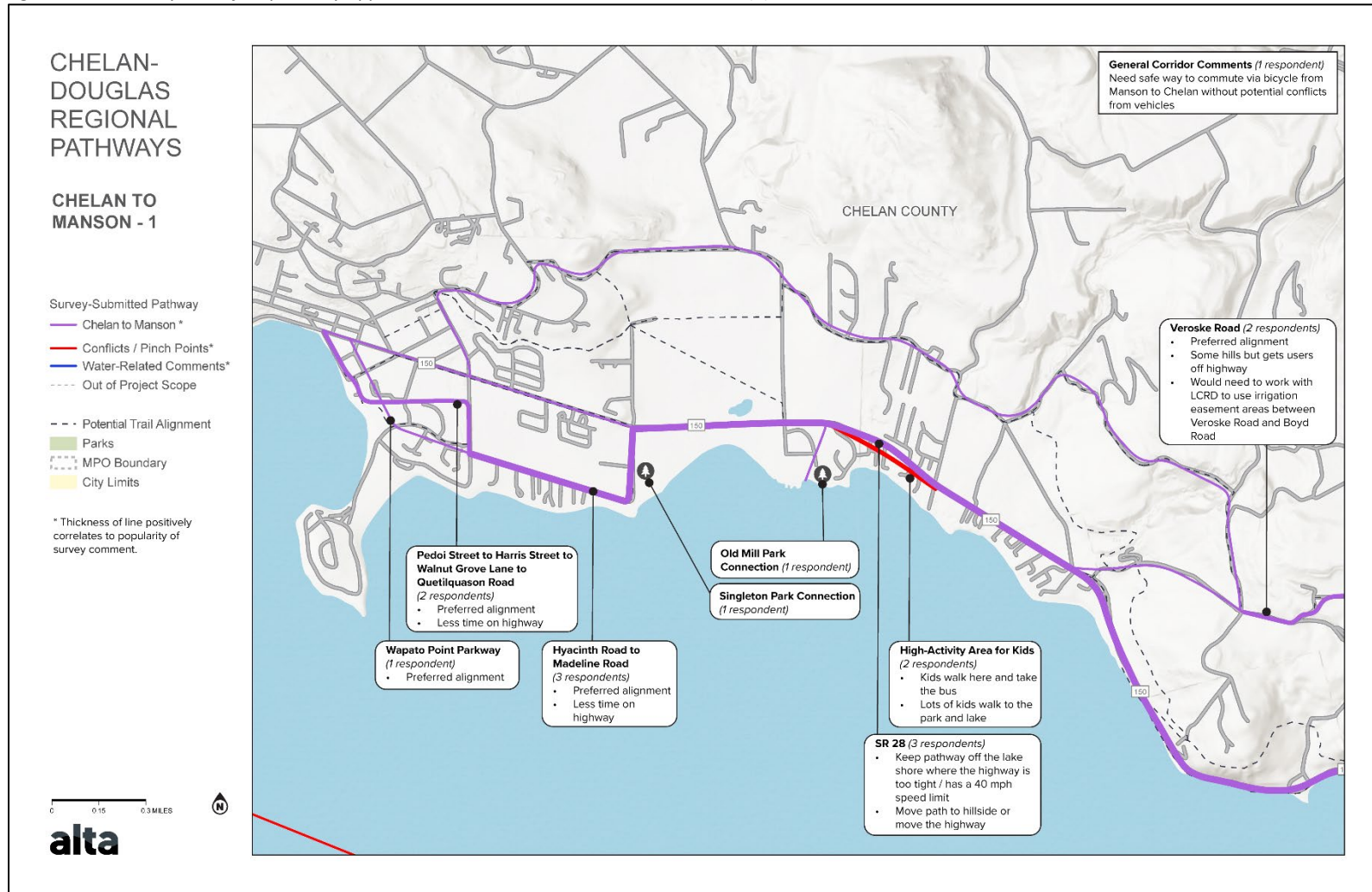
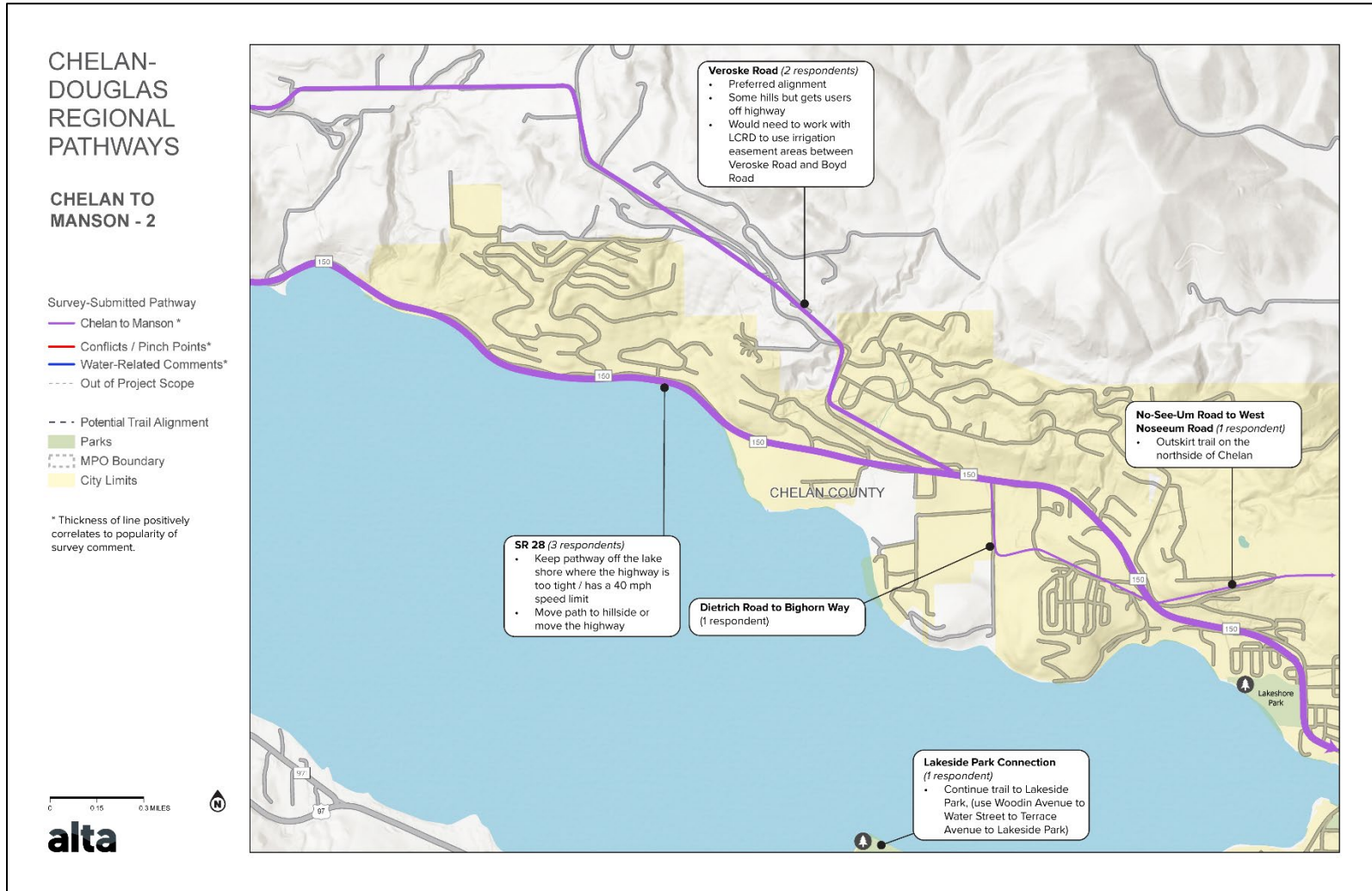


Figure 2: Community-identified pathway opportunities in the Chelan to Manson Corridor (2)





## Leavenworth to Cashmere to Wenatchee Corridor

Figure 3: Community-identified pathway opportunities in the Leavenworth to Cashmere to Wenatchee Corridor (1)

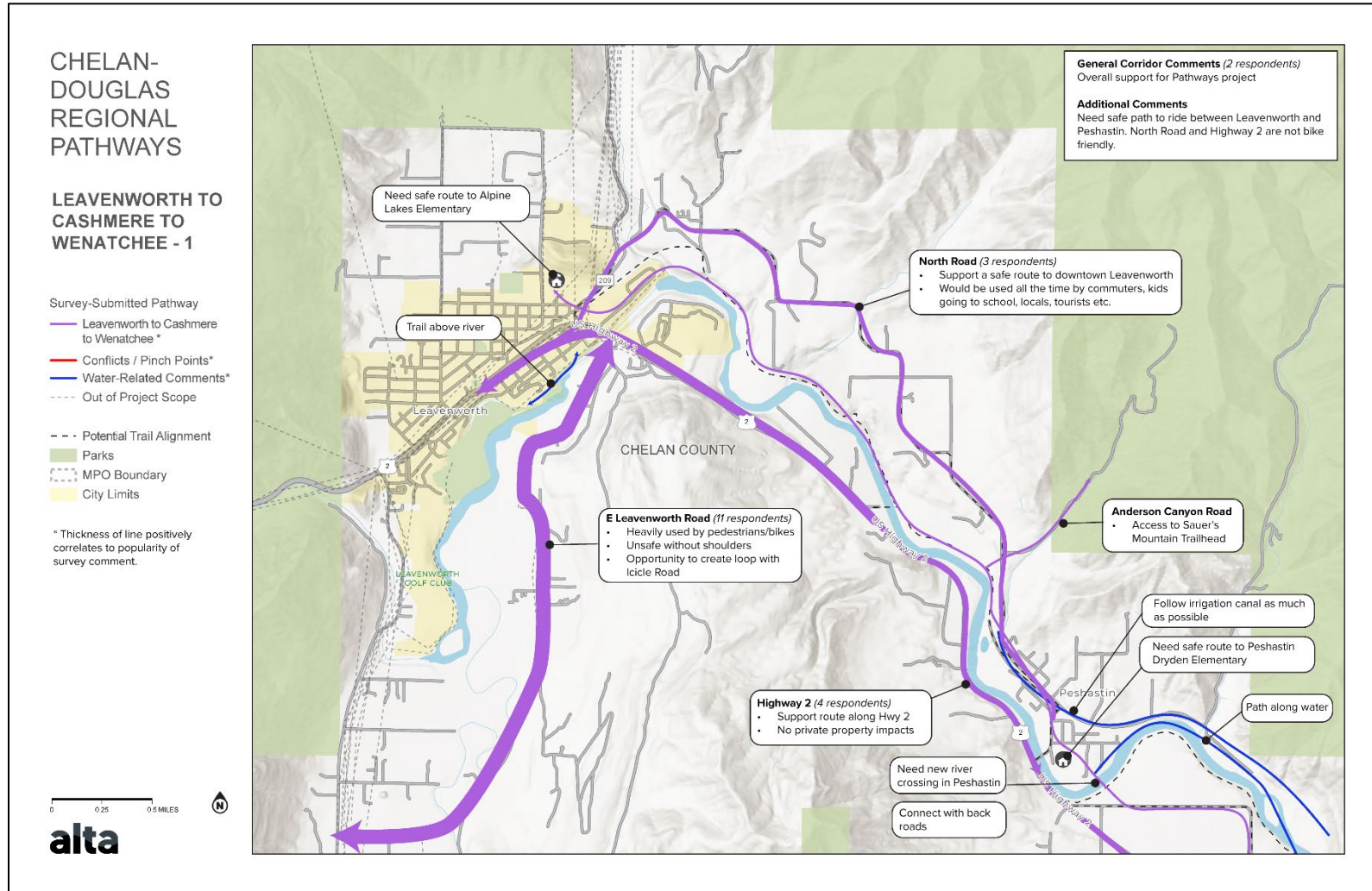


Figure 4: Community-identified pathway opportunities in the Leavenworth to Cashmere to Wenatchee Corridor (2)

# CHELAN-DOUGLAS REGIONAL PATHWAYS

## LEAVENWORTH TO CASHMERE TO WENATCHEE - 2

- Survey-Submitted Pathway
- Leavenworth to Cashmere to Wenatchee \*
  - Conflicts / Pinch Points\*
  - Water-Related Comments\*
  - Out of Project Scope
  - Potential Trail Alignment
  - Parks
  - MPO Boundary
  - City Limits

\* Thickness of line positively correlates to popularity of survey comment.

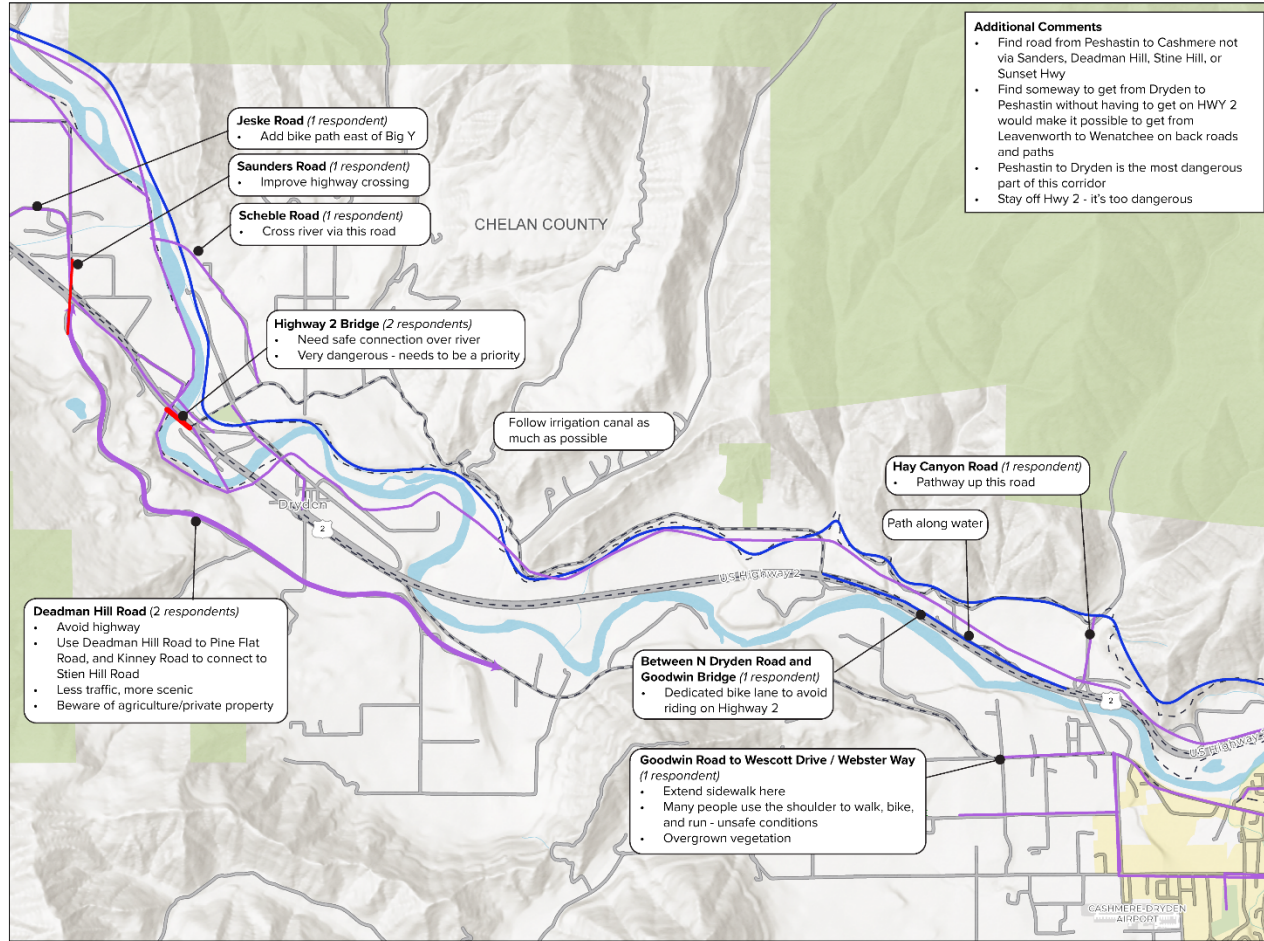
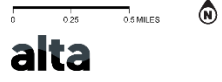


Figure 5: Community-identified pathway opportunities in the Leavenworth to Cashmere to Wenatchee Corridor (3)

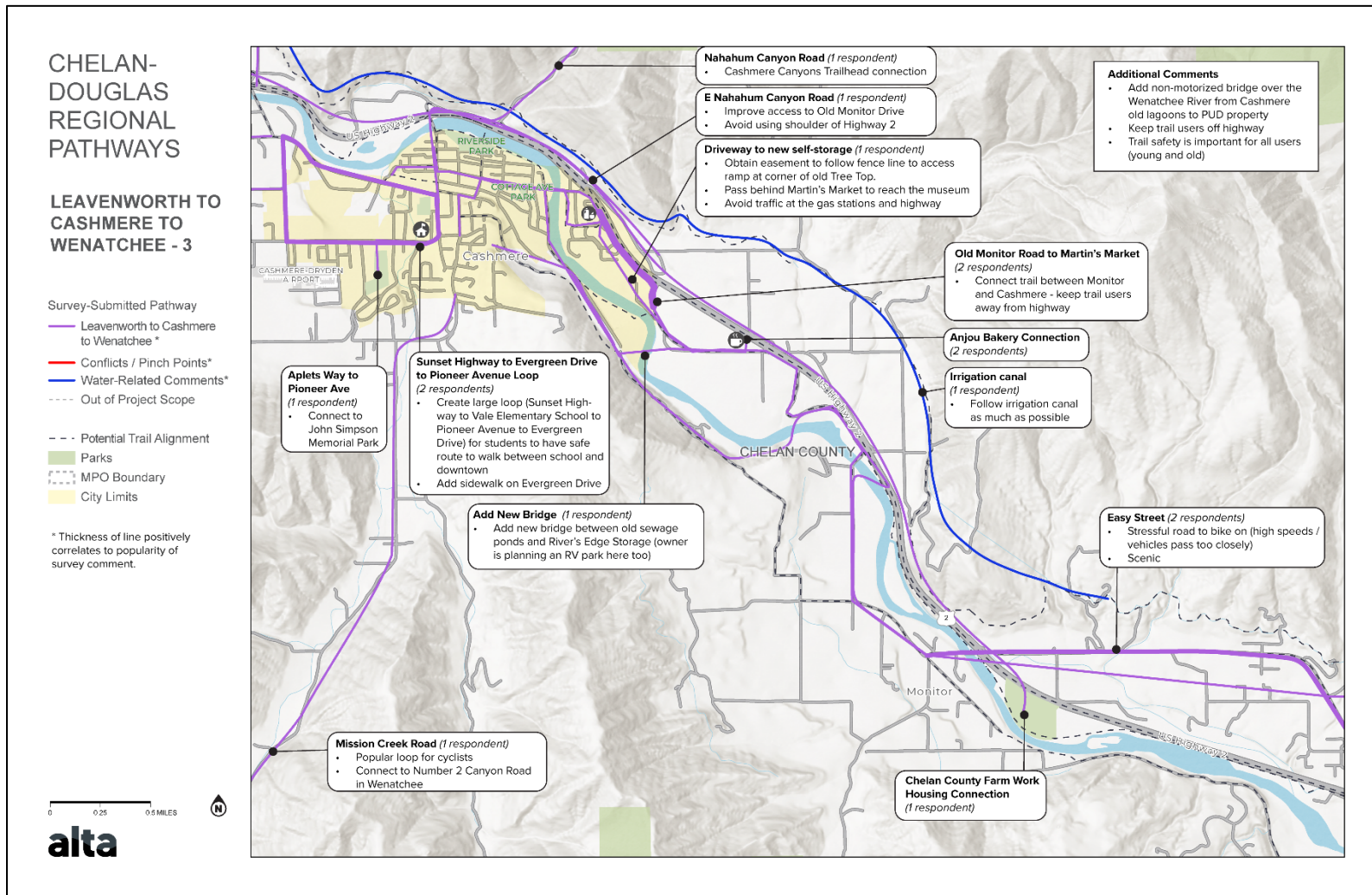
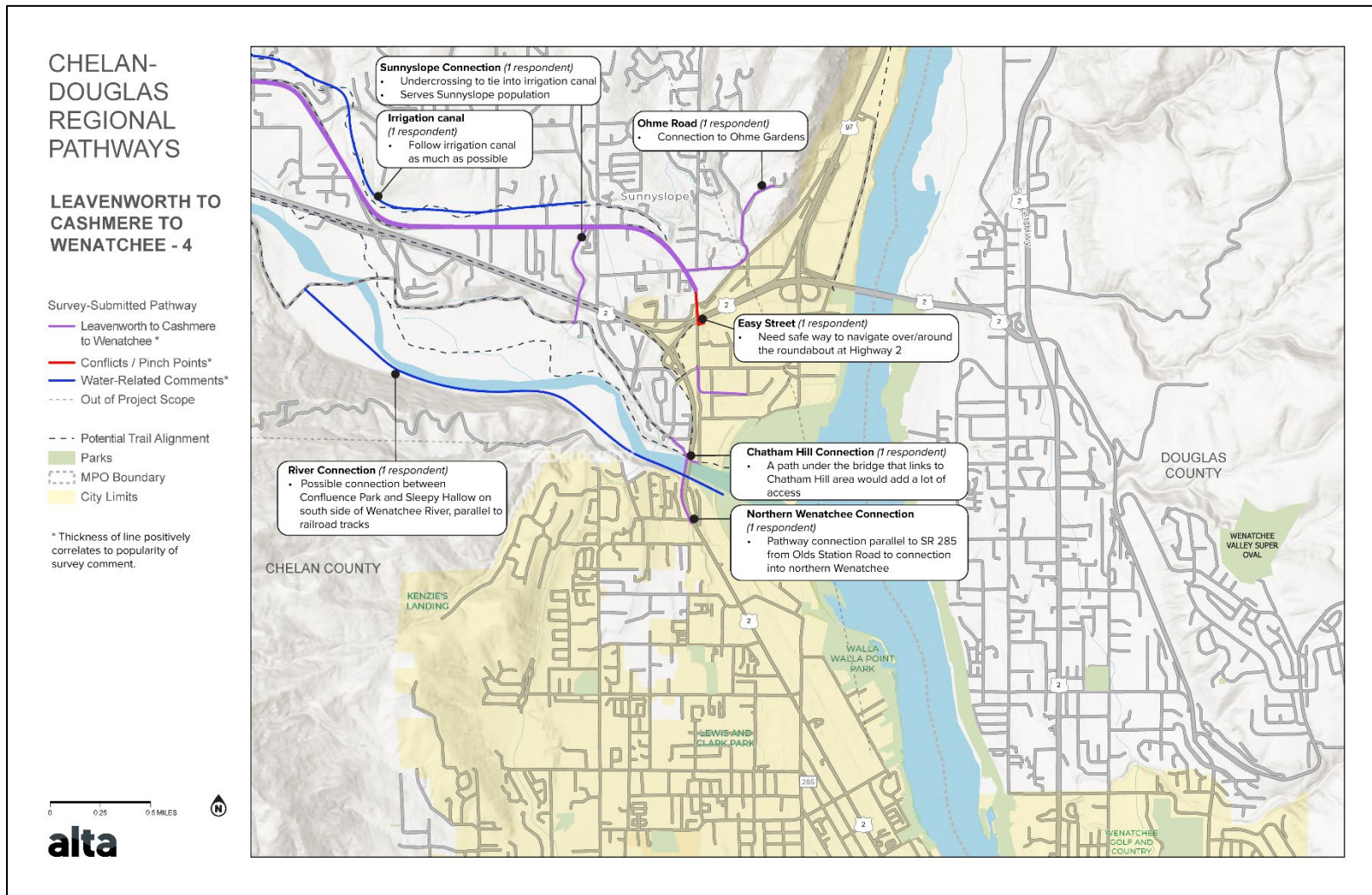


Figure 6: Community-identified pathway opportunities in the Leavenworth to Cashmere to Wenatchee Corridor (4)



## Malaga to Wenatchee Corridor

Figure 7: Community-identified pathway opportunities in the Malaga to Wenatchee Corridor (1)

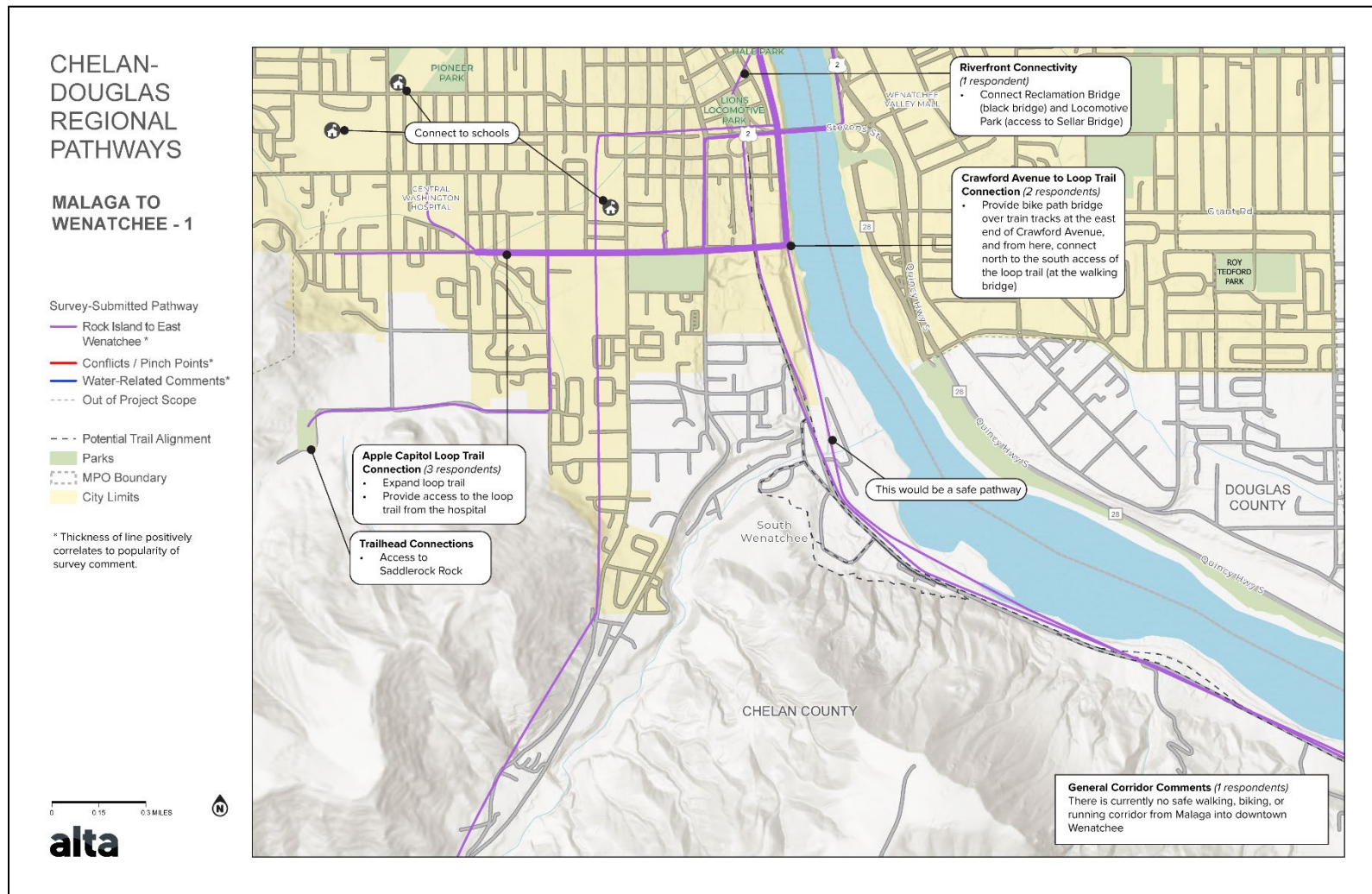


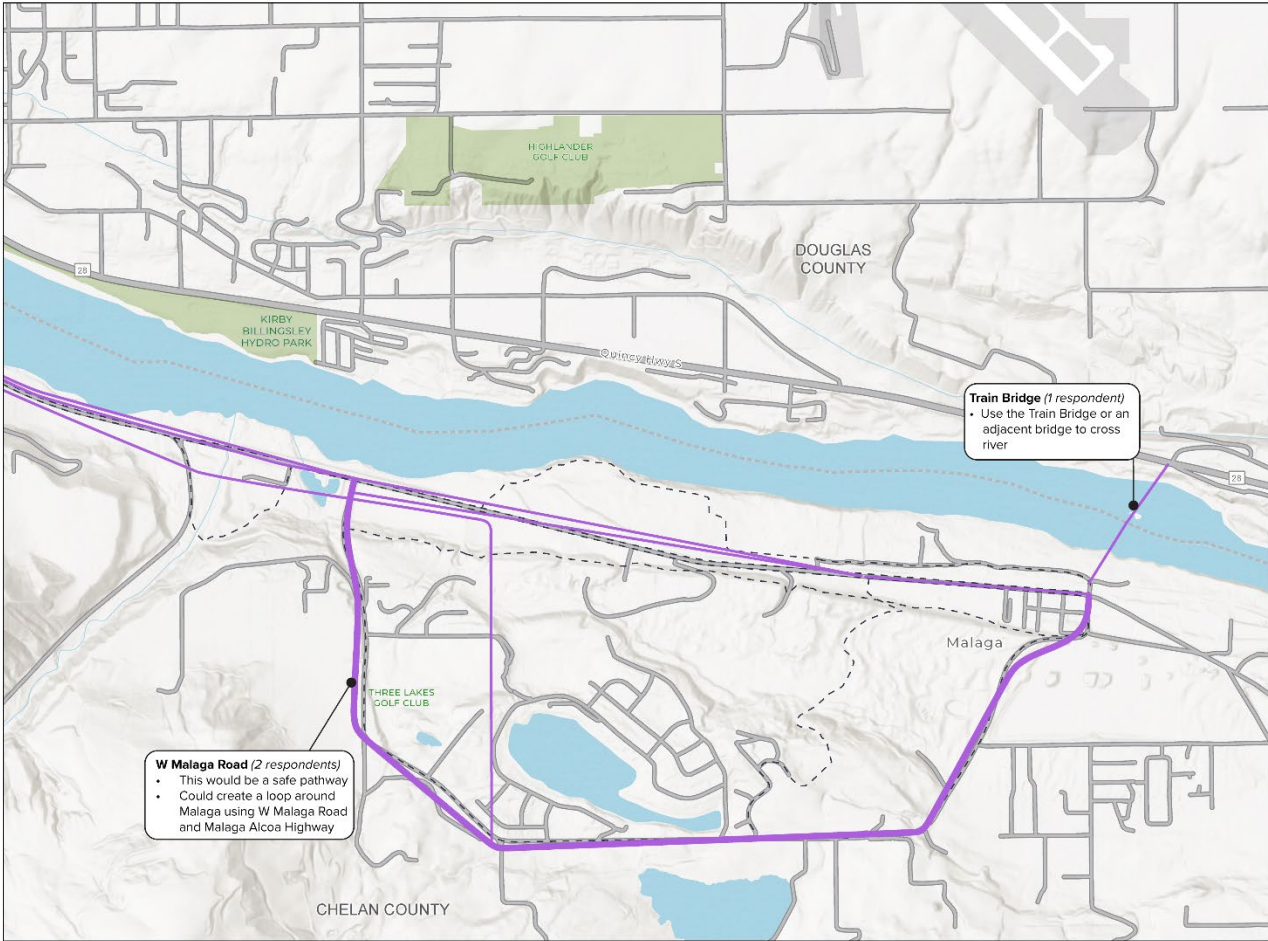
Figure 8: Community-identified pathway opportunities in the Malaga to Wenatchee Corridor (2)

# CHELAN-DOUGLAS REGIONAL PATHWAYS

## MALAGA TO WENATCHEE - 2

- Survey-Submitted Pathway
- Rock Island to East Wenatchee \*
  - Conflicts / Pinch Points\*
  - Water-Related Comments\*
  - Out of Project Scope
  - Potential Trail Alignment
  - Parks
  - MPO Boundary
  - City Limits

\* Thickness of line positively correlates to popularity of survey comment.



**W Malaga Road (2 respondents)**

- This would be a safe pathway
- Could create a loop around Malaga using W Malaga Road and Malaga Alcoa Highway

**Train Bridge (1 respondent)**

- Use the Train Bridge or an adjacent bridge to cross river

## Rock Island to East Wenatchee Corridor

Figure 9: Community-identified pathway opportunities in the Rock Island to East Wenatchee Corridor (1)

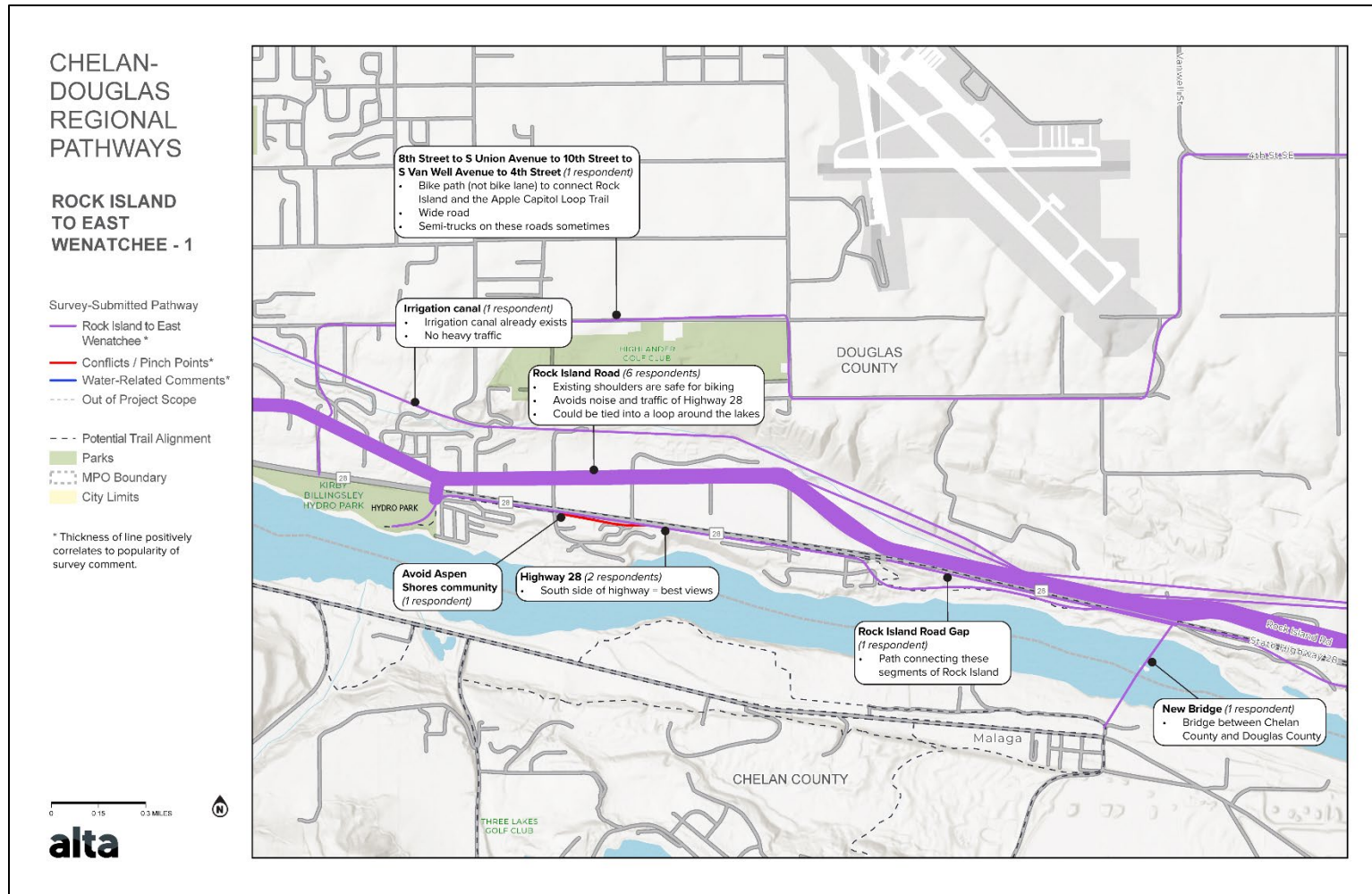


Figure 10: Community-identified pathway opportunities in the Rock Island to East Wenatchee Corridor (2)

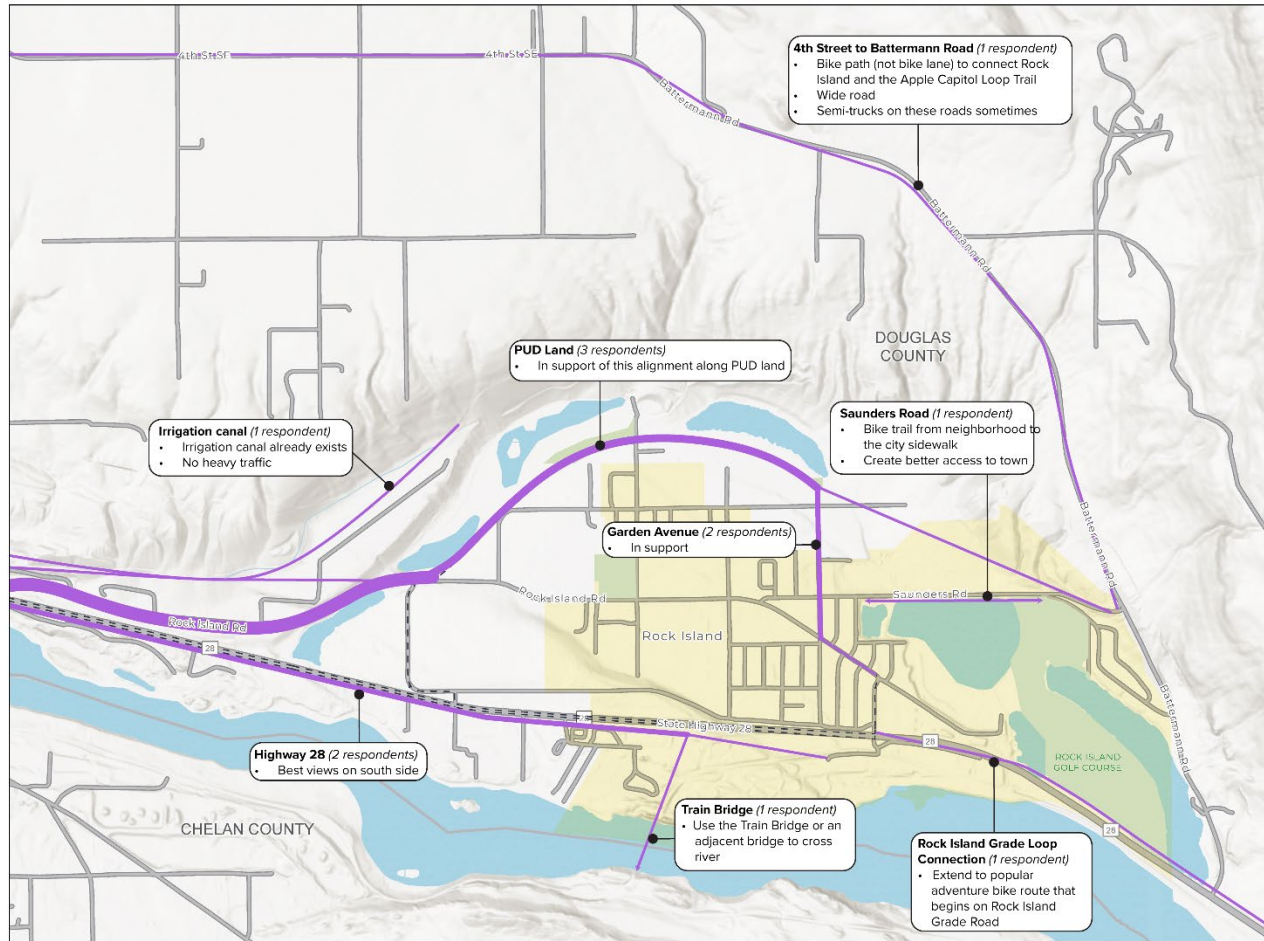
# CHELAN-DOUGLAS REGIONAL PATHWAYS

## ROCK ISLAND TO EAST WENATCHEE - 2

- Survey-Submitted Pathway
- Rock Island to East Wenatchee \*
  - Conflicts / Pinch Points\*
  - Water-Related Comments\*
  - Out of Project Scope

- - - Potential Trail Alignment
- Parks
- MPO Boundary
- City Limits

\* Thickness of line positively correlates to popularity of survey comment.





## Wenatchee to Entiat to Chelan Corridor

Figure 11: Community-identified pathway opportunities in the Wenatchee to Entiat to Chelan Corridor (1)

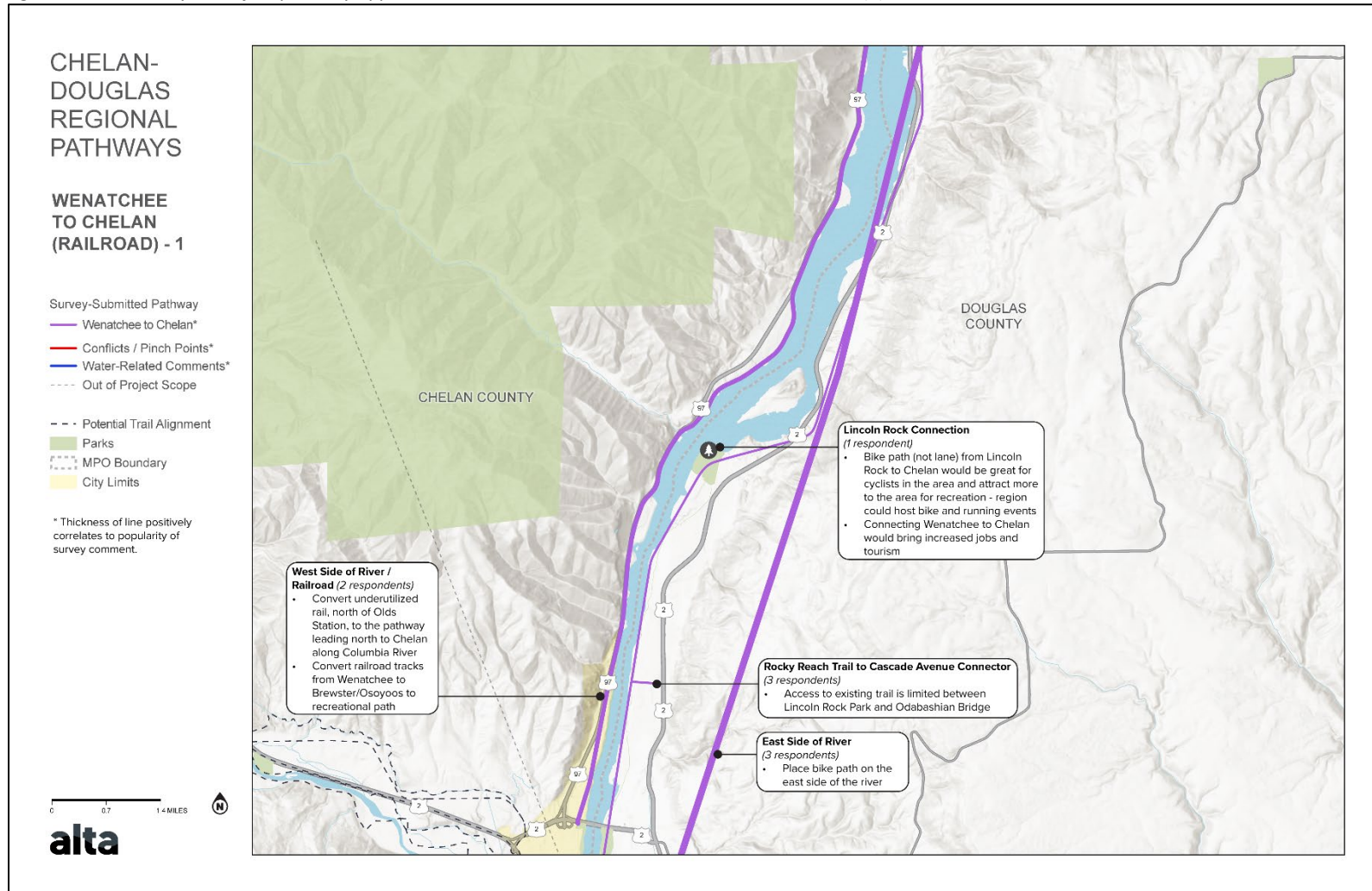


Figure 12: Community-identified pathway opportunities in the Wenatchee to Entiat to Chelan Corridor (2)

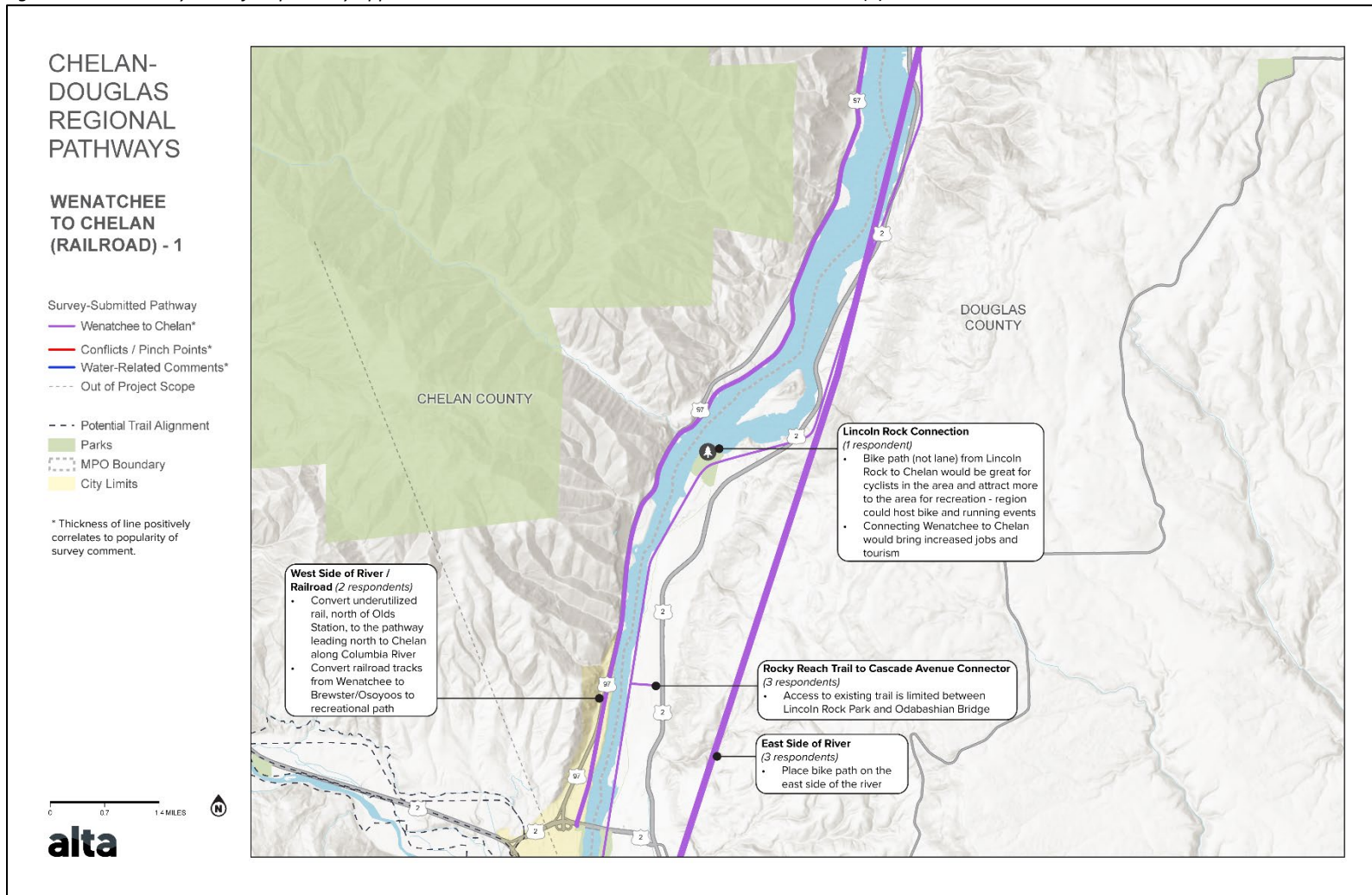


Figure 13: Community-identified pathway opportunities in the Wenatchee to Entiat to Chelan Corridor (3)

